



**AUF V1**

**SPECIFICATION**

**HOUSING** :HIGH GRADE COLD-ROLLED STEEL SHEET FORMED BY HIGH QUALITY MACHINES

**SURFACE TREATMENT** :ION-PHOSPHATE AND ANTI-RUST FINISHED WITH UV RESISTANT WHITE POLYESTER POWDER COAT

**WIRES** :THW, TIS.11-1988 STANDARD

**LAMP HOLDER** :SPRING LOCKED DUSTPROOF TYPE HIGH-HEAT RESISTANCE, TIS344-1987 STANDARD  
:ROTOR LOCKED DUSTPROOF TYPE HIGH-HEAT RESISTANCE, TIS344-1987 STANDARD

**STARTER HOLDER** :ROTOR LOCKED DUSTPROOF TYPE HIGH-HEAT RESISTANCE, TIS344-1987 STANDARD

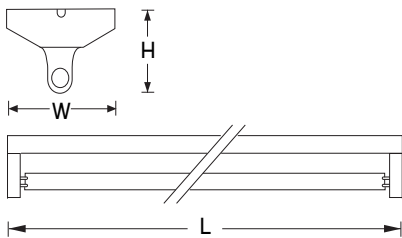
**PROTECTION CLASS** :PROTECTION CLASS EQUIVALENT TO IP 20

**INSTALLATION** :SURFACE MOUNT OR SUSPEND MOUNT

**APPLICATION** :FACTORY, WAREHOUSE, OFFICE BUILDING, DEPARTMENT STORE, CANTEEN, RESIDENTIAL, ETC.

**COMPLETE SET\*** :INCLUDING BALLAST, LAMP, STARTER NORMAL FOR T8 LAMP

**COMPLETE SET\*\*** :INCLUDING ELECTRONIC BALLAST, LAMP FOR T5 LAMP



MODEL	LAMP	DIMENSION(mm.)			WEIGHT (kg.)
		L	W	H	
AUF V1-120	1 x 18W. T8	635	152	82	1.95
AUF V1-132	1 x 32W. T8	1245	152	82	2.65
AUF V1-140	1 x 36W. T8	1245	152	82	2.65

**INSTALLATION : SURFACE MOUNT OR SUSPEND MOUNT**