



AUF B1-220-240 WP

SPECIFICATION

HOUSING :HIGH GRADE COLD-ROLLED STEEL SHEET FORMED BY HIGH QUALITY MACHINES

SURFACE TREATMENT :ION-PHOSPHATE AND ANTI-RUST FINISHED WITH UV RESISTANT WHITE POLYESTER POWDER COAT

WIRES :THW, TIS.11-1988 STANDARD

LAMP HOLDER :WATER AND DUSTPROOF LAMP HOLDER FROM GERMANY, ACCORDING TO IEC 60400/VDE 0615 PART3. UL (INSECT PROOF LAMP)

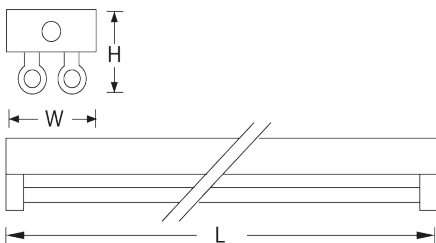
STARTER HOLDER :ROTOR LOCKED DUSTPROOF TYPE HIGH-HEAT RESISTANCE, TIS344-1987 STANDARD

PROTECTION CLASS :PROTECTION CLASS EQUIVALENT TO IP 44

INSTALLATION :SURFACE MOUNT OR SUSPEND MOUNT

APPLICATION :FACTORY, WAREHOUSE, CANTEEN, CAR PARK ETC.

COMPLETE SET* :INCLUDING BALLAST, LAMP, STARTER NORMAL FOR T8 LAMP



MODEL	LAMP	DIMENSION(mm.)			WEIGHT (kg.)
		L	W	H	
AUF B1-220 WP	2 x 18W. T8	635	122	100	2.75
AUF B1-240 WP	2 x 36W. T8	1245	122	100	4.80

INSTALLATION : SURFACE MOUNT OR SUSPEND MOUNT